

Delaware's Drug Threats and Trends

Global Outlook

- 155-250 million people (3.5% - 5.7%) aged 15-64 years of age had used illicit substances at least once in the previous year

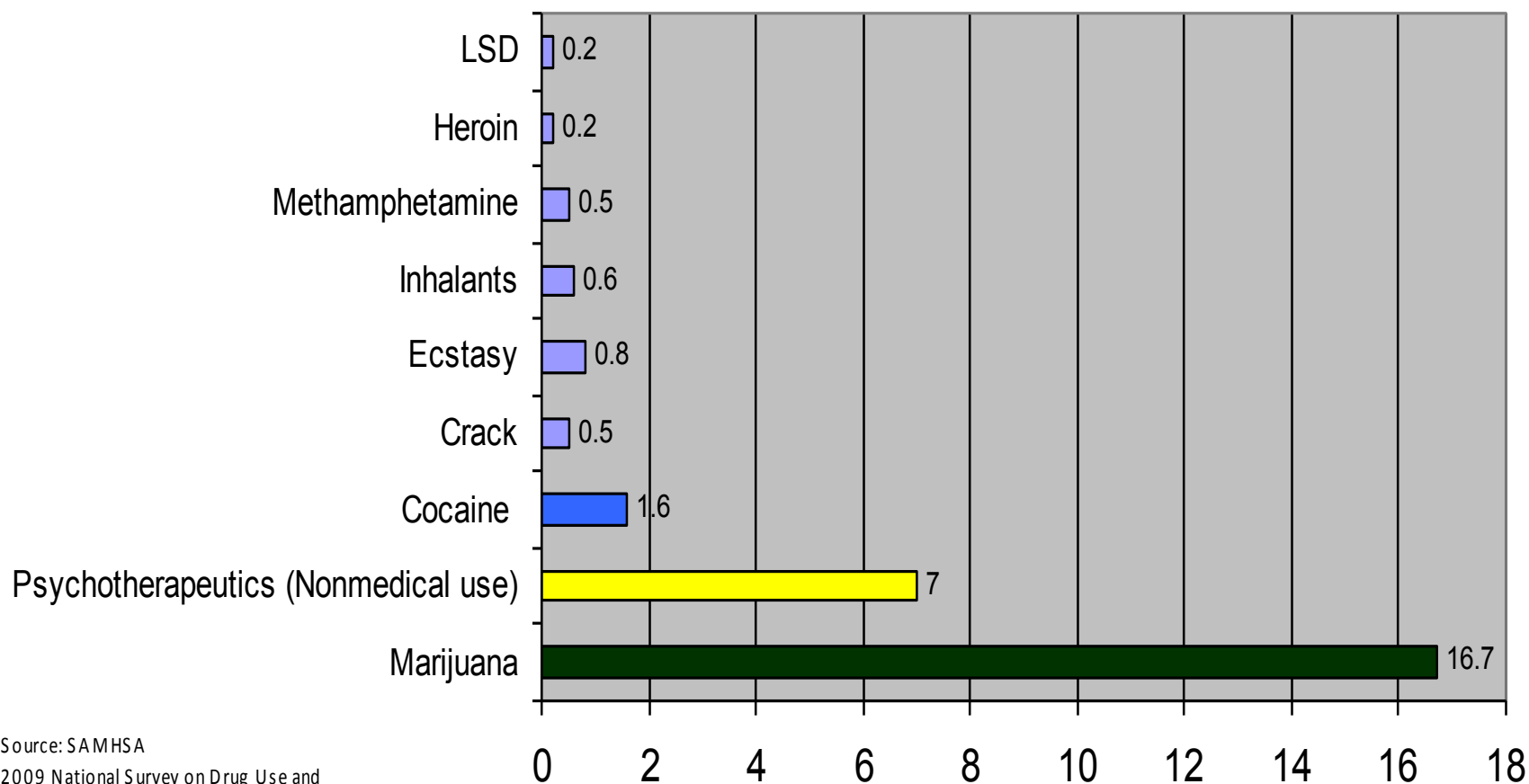
(Source: United Nations Office on Drugs and Crime (UNODC) World Drug Report 2010)

- Cannabis users comprise the largest number of illicit drug users at 125-190 million
- Amphetamine-type stimulants were the second most common
- Opiates/Cocaine were the third most common

National Outlook

- In 2009, an estimated 21.8 million Americans aged 12 or older were current (past month) illicit drug users
- This estimate represents between 8.7 - 13.5% of the population aged 12 or older and includes marijuana, cocaine (including crack), heroin, hallucinogens, inhalants, and/or non-medical usage of prescription-type psychotherapeutics

Number of Illicit Drug Users Nationally in 2009 Aged 12 and Older (Millions)



Source: SAMHSA
2009 National Survey on Drug Use and
Health

AOR Top 5 Drug Threats

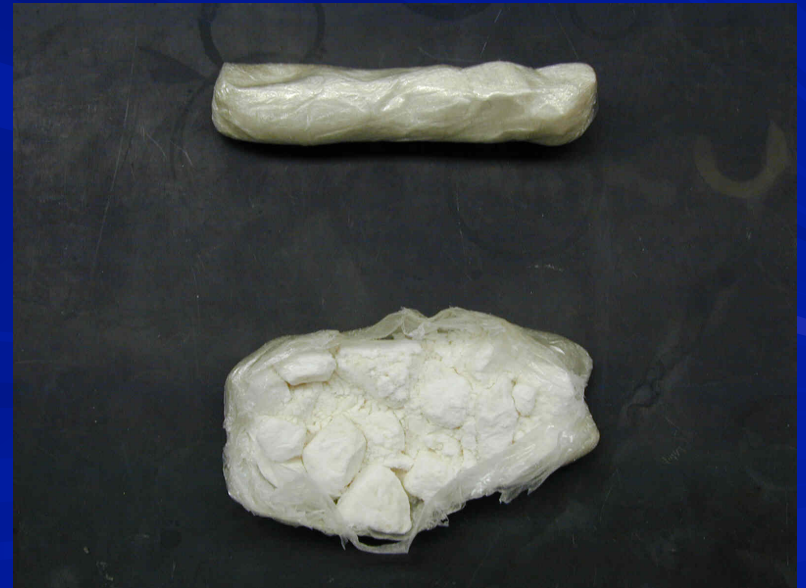
1. Heroin
2. Cocaine HCL
3. Crack Cocaine
4. Licit Pharmaceutical Drugs
5. Cannabis

* Philadelphia Division Wide*

Delaware Specific Threats

1. Crack Cocaine
2. Cocaine HCL
3. Heroin
4. Cannabis
5. Schedule II Narcotics (Oxycodone, Oxycontin, Percocet)

Crack Cocaine / Cocaine HCL



Threat Picture

- Availability is stable and is typically supplied to Delaware users via African-American and independent Caucasian groups operating throughout the state.
- Wholesale distribution is facilitated through Philadelphia and New York City with a primary source of Mexico via southwest border states.

Use

- Nationally, in 2009 there were 1.6 million current cocaine users aged 12 or older (approximately 0.7 percent of the population)
- In Delaware, approximately 6% of high school students reported using some form of cocaine one or more times in their lifetime

Abuse

- Cocaine continues to be in high demand, unaffected by reported shortages during the 2007 and 2008 reporting periods. Cocaine treatment statistics have remained constant over the past five reporting periods. An increase in Crack Cocaine use among young white males in New Castle County, DE was reported this period.

Price Summary

Cocaine HCL

Regional

Gram \$50-\$125
1/8 Ounce \$125-\$350
Ounce \$650-\$1300
Kilo \$16,000-\$42,000

Delaware

Gram \$50-\$125
1/8 Ounce N/R
Ounce \$1100-\$1300
Kilo \$32,000-\$36,000

[http://www.whitehousedrugpolicy.gov/streetterms/
ByTopic.asp?intTopicID=3](http://www.whitehousedrugpolicy.gov/streetterms/ByTopic.asp?intTopicID=3)

Price Summary

Crack Cocaine

Regional

Rock \$5-\$40

Gram \$50-\$125

1/8 Ounce N/R

Ounce \$750-\$1400

Kilo \$20,000-\$25,000

Delaware

Rock \$20-\$40

Gram \$100-\$125

1/8 Ounce N/R

Ounce \$1000-\$1200

Kilo N/R

[http://www.whitehousedrugpolicy.gov/streetterms/
ByTopic.asp?intTopicID=3](http://www.whitehousedrugpolicy.gov/streetterms/ByTopic.asp?intTopicID=3)

Street Terms

[http://www.whitehousedrugpolicy.gov/
streetterms/ByType.asp?intTypeID=3](http://www.whitehousedrugpolicy.gov/streetterms/ByType.asp?intTypeID=3)

“Powder, Girl”

“Hard, Boy (Sussex)”

Heroin



Threat Picture

- Availability is stable and is typically supplied to Delaware users via Philadelphia based DTOs. Philadelphia and Wilmington remain source cities for Southeast Asian and South American heroin.
- The purity of the heroin allows users to snort it, thereby ensuring its popularity among teens and young adults. Reports continue to indicate, however, that as users become addicted, they eventually turn to injection in order to feel the effects even faster. Most users consume heroin either by itself or in combination with cocaine, alcohol, or marijuana, combinations that can lead to unintended overdose deaths.

Use

- Recently, Philadelphia was identified as having the highest purity South American heroin east of the Mississippi, at approximately 55%
- In Delaware, approximately 4% of high school students reported using heroin one or more times in their lifetime

Abuse

- Heroin abuse has remained fairly consistent throughout Delaware in recent years. As in Philadelphia, Delaware experiences poly-drug use treatment admissions, as well as poly-drug involved overdoses. Treatment centers consistently indicate that heroin addiction is one of the most frequently addressed in residential treatment facilities.

Price Summary Heroin

Regional

Gram \$40-\$250

1/8 Ounce N/R

Ounce \$2100-\$6000

Kilo \$45,000-\$150,000

Delaware

Gram \$75-\$150

1/8 Ounce N/R

Ounce \$2100-\$6000

Kilo N/R

[http://www.whitehousedrugpolicy.gov/streetterms/
ByTopic.asp?intTopicID=3](http://www.whitehousedrugpolicy.gov/streetterms/ByTopic.asp?intTopicID=3)

Street Terms

[http://www.whitehousedrugpolicy.gov/
streetterms/ByType.asp?intTypeID=5](http://www.whitehousedrugpolicy.gov/streetterms/ByType.asp?intTypeID=5)

“H, Girl, Boy (NC), Tar”

“Hair Ron”

Cannabis

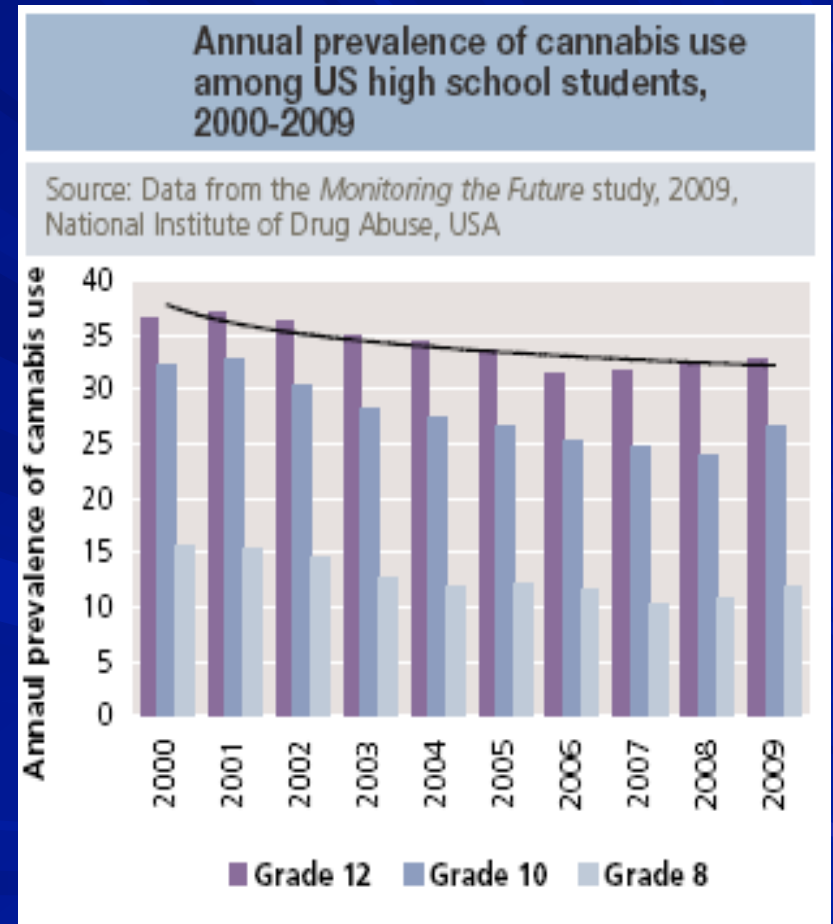


Threat Picture

- Availability is stable and is typically supplied to Delaware users via African-American and Hispanic DTOs.
- Marijuana imported into the State of Delaware usually originates in the southwest border region and is transported into the area by Mexican traffickers or from Canada by Vietnamese DTOs.

Use

- In 2009, marijuana was the most commonly used illicit drug with 16.7 million past month users (6.6%) among persons aged 12 or older.



Use cont.

- Approximately 43% of Delaware high school students admitted to using marijuana one or more times during their lifetime; 11% tried marijuana for the first time before age 13.

Abuse

- Recreational marijuana use by teenagers and adults continues to dominate throughout the Philadelphia Division. Although recreational marijuana use remained popular with high school and college age students, adults reportedly remained the predominant users of marijuana and users represent most socioeconomic status and ethnic backgrounds.

Abuse cont.

- In Delaware, treatment centers report an increase in treatment for marijuana abuse over the previous five year period.

Price Summary Marijuana

Regional

Gram N/R

1/8 Ounce N/R

Ounce \$600(BC Bud)

Ounce \$150-\$300 (Dom)

Pound \$800-\$2,000

Delaware

Gram N/R

1/8 Ounce N/R

Ounce \$600 (BC Bud)

Ounce \$150-\$200 (Dom)

Pound \$800-\$1,000

[http://www.whitehousedrugpolicy.gov/streetterms/
ByTopic.asp?intTopicID=3](http://www.whitehousedrugpolicy.gov/streetterms/ByTopic.asp?intTopicID=3)

Street Terms

[http://www.whitehousedrugpolicy.gov/
streetterms/ByType.asp?intTypeID=1](http://www.whitehousedrugpolicy.gov/streetterms/ByType.asp?intTypeID=1)

“Weed, Herb, Tree”

Schedule II Narcotics



Threat Picture

- Availability remains stable, according to the Delaware Office of Narcotics and Dangerous Drugs, prescription drugs are diverted in various ways in Delaware, including but not limited to: (a) legitimate prescriptions and/or prescription pads sold to third parties; (b) legitimate prescriptions filled and the pills sold to third parties; (c) "doctor shopping" (individuals obtaining prescriptions from multiple doctors); (d) residential theft, including from real estate open houses; and (e) theft from family members.

Use

- During a national survey of persons aged 12 or older in 2008-2009 who used pain relievers non-medically within the prior 12 month period,
 - 55.3 percent got the drug they most recently used from a friend or relative for free.
 - 17.6 percent reported they got the drug from one doctor.
 - Approximately 4.8 percent got pain relievers from a drug dealer or other stranger.
 - 0.4 percent bought them on the Internet.

Use cont.

- Delaware law enforcement has reported an increase in prescription medication cases, especially the Codones (Oxycodone and Hydrocodones), Percocet, Vicodin, Ritalin, and Adderall.

Abuse

- Reports from state and local law enforcement, and counseling and rehabilitation centers in Delaware show a growing trend of prescription drug abuse, as they reported that Oxycodone (specifically 30-mg strength) and Percocet were the most abused prescription drugs.
- A state methadone treatment center, reported an increase of 25% more patients from 2008 to 2009. Although the increase in patients is relative to all opiate abuse, including heroin, state statistics show that heroin abuse remained relatively stable over the last four years, while abuse of other opiates and synthetics have increased almost 400% during this same time period.

Price Summary

Oxycodone – 20mg - \$20-\$30

Oxycontin – 80mg - \$22-\$34

Percocet – 7.5mg - \$8-\$10

[http://www.whitehousedrugpolicy.gov/streetterms/
ByTopic.asp?intTopicID=3](http://www.whitehousedrugpolicy.gov/streetterms/ByTopic.asp?intTopicID=3)

Street Terms

[http://www.whitehousedrugpolicy.gov/
streetterms/ByType.asp?intTypeID=22](http://www.whitehousedrugpolicy.gov/streetterms/ByType.asp?intTypeID=22)

“Oxy(s), Blues, Greens, 20s, 30s
(Based on mg)”

Emerging Trends

- Poly-drug Mixes

- Contamination

- Synthetic Marijuana

Poly-drug Mixes

- PFD reported cocaine has consistently been used in combination with heroin, LSD, and various Oxycodone and alcohol products.
- Recent toxicology data of 1200 decedents revealed over 70% had multiple drugs in their systems at the time of death.

Poly-drug Mixes cont.

- Benzodiazepines (Xanax, Valium) represented the highest percentage of the drugs found with cocaine second.
- When opiate testing includes fentanyl, hydrocodone, methadone, morphine/heroin, and oxycodone, they represent over 60% of the cases studied.

Poly-drug Mixes cont.

- “Kill” – A possible mix of cocaine, benzodiazepine, and opiates. Subjects indicate they had injected heroin.
- Local law enforcement patrol officers have indicated an increase in the number of subjects with multiple types of drugs in their possession. “If you find weed or crack on them, they almost always have pills too.”

Contamination

- **Levamisole**, a veterinary anti-parasitic agent, is being found in victims of suspected cocaine overdose. Added to cocaine in South American production for unknown reasons, the drug reduces the white blood cell count and rapidly creates a life threatening situation.
- Northeast labs estimate 60-70% of all NE cocaine is contaminated with Levamisole.

Contamination cont.

- Symptoms of Levamisole Poisoning (agranulocytosis)
 - High fever, chills, weakness
 - Swollen glands
 - Painful sores
 - Persistent infections; skin, pneumonia
 - Discoloration of skin, usually purple around the ears first

Contamination cont.

- Ecstasy overdose killing one and hospitalizing over a dozen in CA is suspected to have been contaminated with **Benzylpiperazine (BZP)**
- The UK has experienced similar incidents of subjects claiming to have taken “party pills”, resulting in 20-30 days of hospitalization

Contamination cont.

- Although contamination is suspected, case studies on “tainted” Ecstasy revealed the patients may have ingested BZP WITH MDMA, causing a synergistic effect
- Symptoms
 - Acute psychosis
 - Seizures
 - Renal failure

Contamination cont.

- Anthrax (non bio-terrorism) tainted Heroin suspected in Germany and UK
- 16 reported deaths in UK
- Strain typing continues, heroin is suspected to still be in circulation
- Source of contaminated heroin is unknown

Questions?