

How We Used Data to Inform the Selection of Delaware's Prevention Priorities

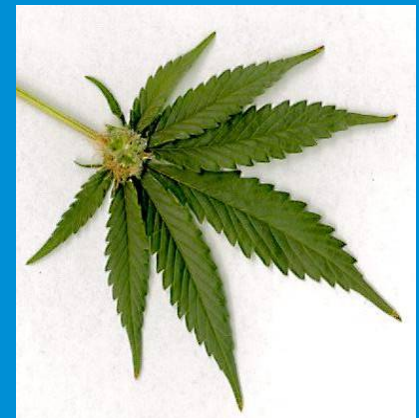


Presentation by the Evaluation Team from the Center for Drug and Alcohol Studies to the Delaware Advisory Council for the Strategic Prevention Framework State Incentive Grant
July 8, 2011, Buena Vista Conference Center



Today's Goals

- Review the role of Delaware's State Epidemiological Outcomes Workgroup – DDATA
- Look at Delaware's 3 Prevention Priorities
 - Highlighting the SPF-SIG Focus on Alcohol Abuse
 - Some Recent Data Supporting State Priorities





Delaware Drug and Alcohol Tracking Alliance


Developing Role of DDATA, Delaware's state epidemiological outcome workgroup

1. Before SPF-SIG: 2007-2009, Brought key data stakeholders together to meet on a regular basis and created initial State Profiles
2. 2008, Used the Data in Getting the SPF-SIG
3. 2009-2010: Informed the SPF-SIG Strategic Plan with DAC and the State Strategic Plan (with DEPAC)
4. Ongoing Role in Surveillance, Evaluating Change, and Promoting use of Data-Driven decision making by the SPF-SIG and DEPAC

Active DDATA Member Organizations

- **Delaware Department of Health and Social Services**
 - Division of Substance Abuse and Mental Health
 - Division of Social Services
 - Division of Services for Aging & Adults with Disabilities
 - Division of Public Health
- **Delaware Department of Services for Children, Youth and Families**
 - Division of Prevention and Behavioral Health Services
- **Delaware Department of Education**
- **Delaware State Police**
- **Office of Highway Safety**
- **Delaware Council on Gambling Problems**
- **Criminal Justice Council and Statistical Analysis Center**
- **Nemours Health and Prevention Services**
- **University of Delaware Center for Drug and Alcohol Studies**
- **Delaware Department of Correction**
- **US Drug Enforcement Administration**
- **Delaware National Guard**
- **United Way of Delaware**

DDATA Provides Needs Assessment for Delaware's Prevention Planning (SPF-SIG, Block Grant, other State Initiatives)

- **Prioritizing Problems through Analysis of Prevalence, Trend and Comparison data**
 - **Identifying Resources and Gaps**
 - **Tracking Consumption, Consequences, and Context**
 - **Making Information Accessible to Federal, State, and Community Stakeholders**
- 

Criteria Used by DDATA to Set Prevention Priorities:

Data are available at the sub state and ideally the community level;

Data will be available on a regular basis in the future; and

The substance poses an important problem in terms of:

**Magnitude of the problem, severity,
national comparisons, and trends**

Delaware's 3 Prevention Priorities:

1. Alcohol abuse by underage youth and young adults;
2. Marijuana use for youth and young adults; and
3. Prescription Opiates and Heroin abuse across the life course.

**Context
(risk and
protective
factors)**

Focus of Prevention & Intervention Activities:
policy, enforcement,
parenting, school &
neighborhood
environments



**Consumption
(the problem)**

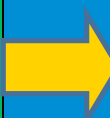
Priority Substances:
Alcohol, Marijuana,
Prescription Drugs,
Heroin



**Consequences
(the red flag)**

Deaths, Social Services,
Justice/ Corrections,
Educational
Remediation, Treatment:
Medical, Mental Health,
Substance Abuse

**Things we need to
change.**



**Changing the Context will
change Consumption.**



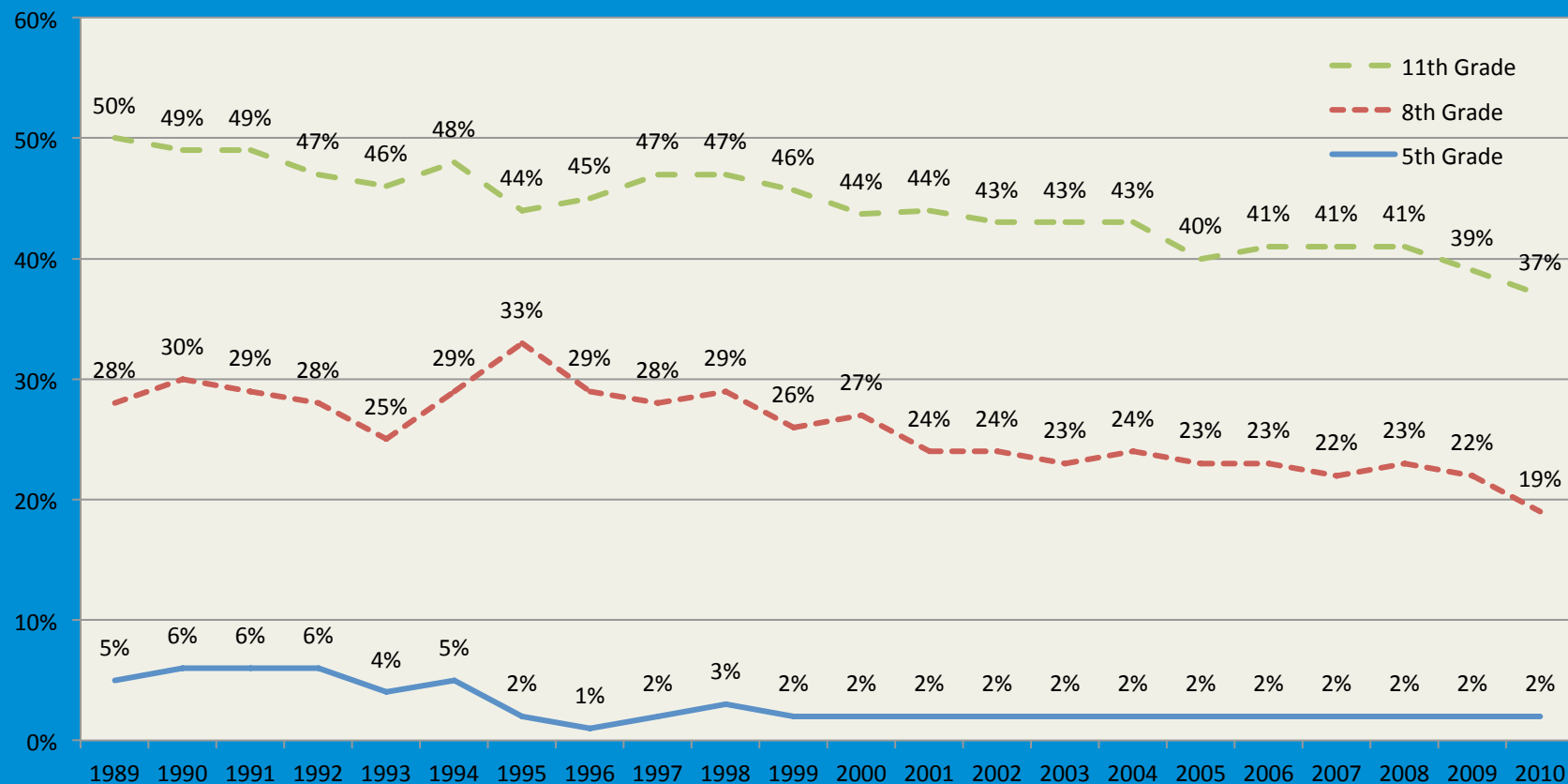
**Changing Consumption will
reduce Consequences!**

Briefly look at some illustrative data related to each Priority and mostly to Consumption and Consequences

Prevention Efforts we will hear about from our Grantees are going to be looking at the Context for change



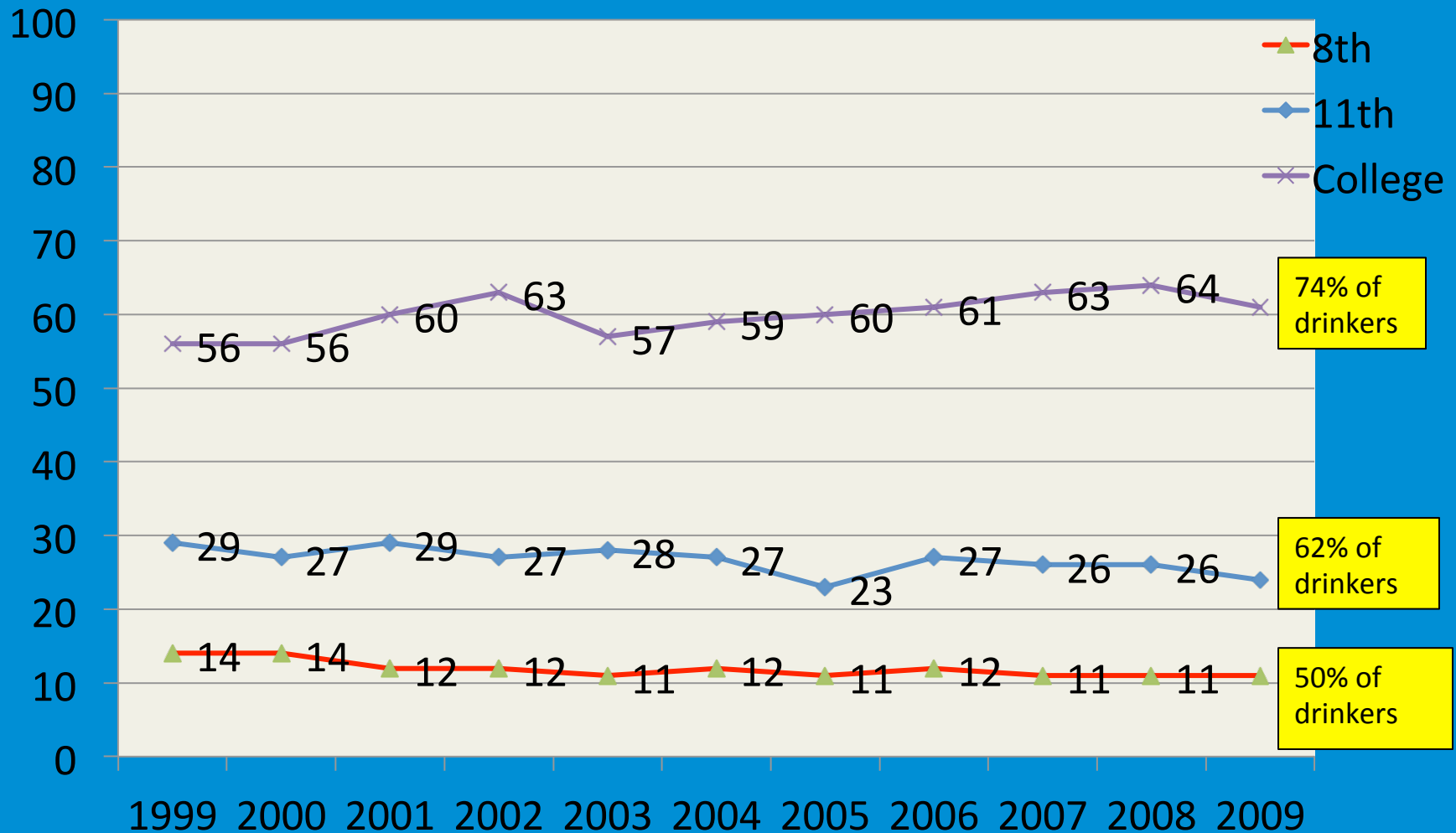
Long-term Trends in Past Month Alcohol Use for Delaware 5th, 8th, and 11th Graders 1989-2010



Consumption – drinking declined some but still by far most abused drug

Binge Drinking, Delaware 8th, 11th, & College

Consumption – binge drinking high and most who drink, binge drink

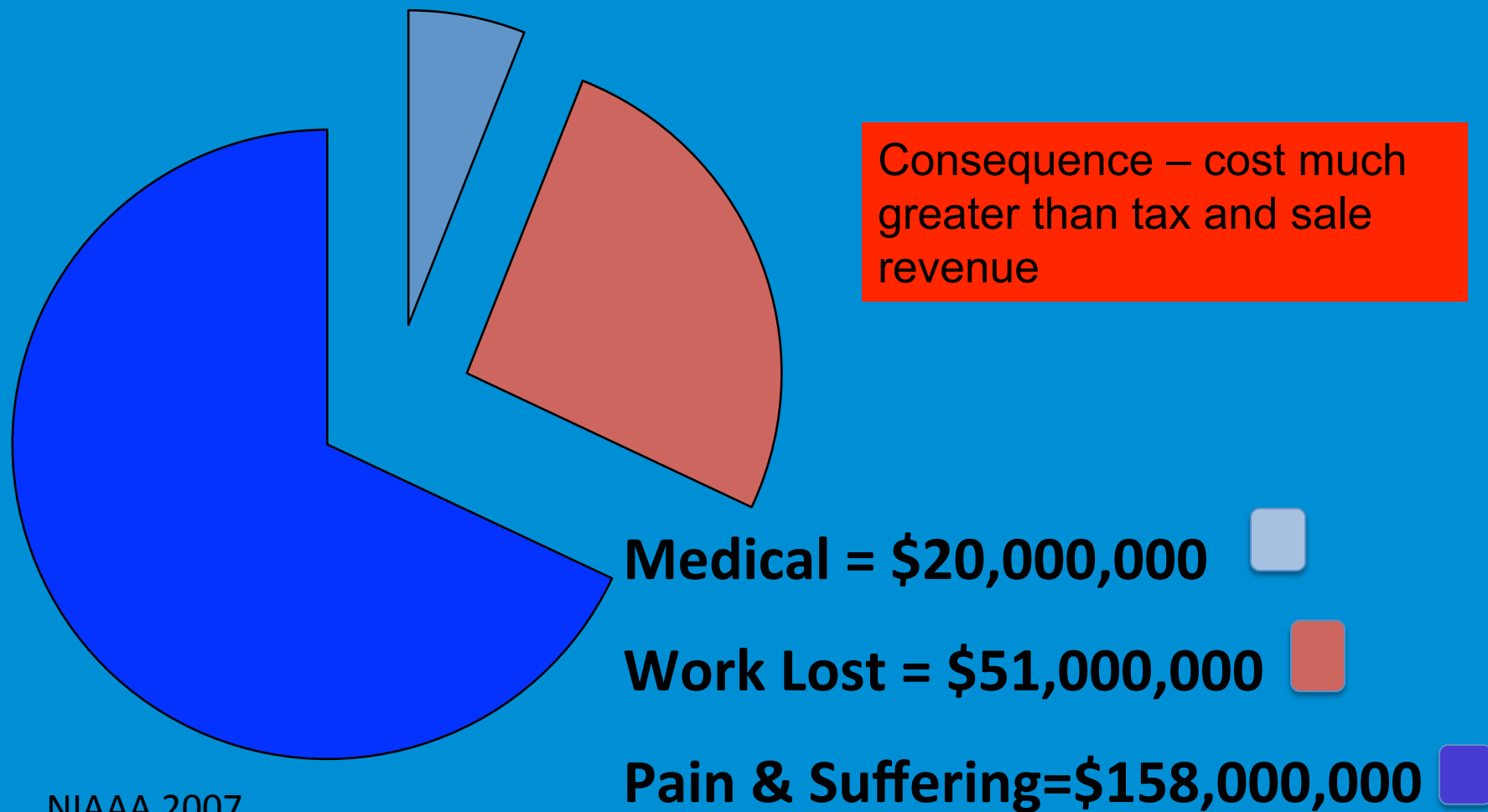


**In 2010 27% of Delaware 11th Graders
Meet the Criteria for Alcohol
Dependence and/or Abuse:**

**25% Abuse only; and
2% Abuse and Dependence**

Consequence – many youth meet clinical criterion
for abuse but are not yet dependent

Costs of Underage Drinking in Delaware = \$228 Million Annually



Delaware students start drinking earlier, which makes them more likely to suffer consequences

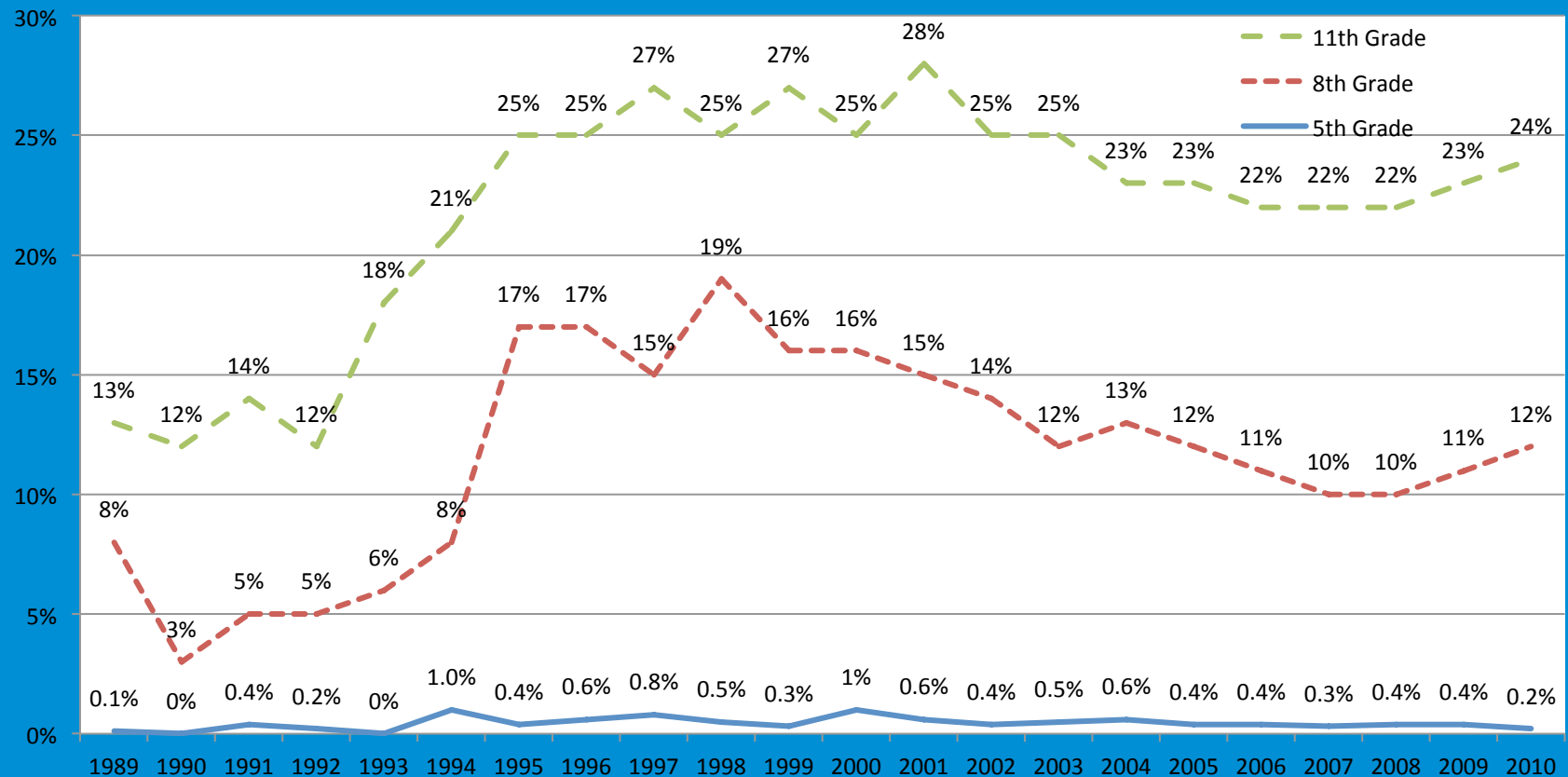
- 25% of Delaware high school students used alcohol before age 13 (9th out of 39 states)
- 10% of Delaware high school students used marijuana before age 13 (10th out of 39 states)

Early Consumption



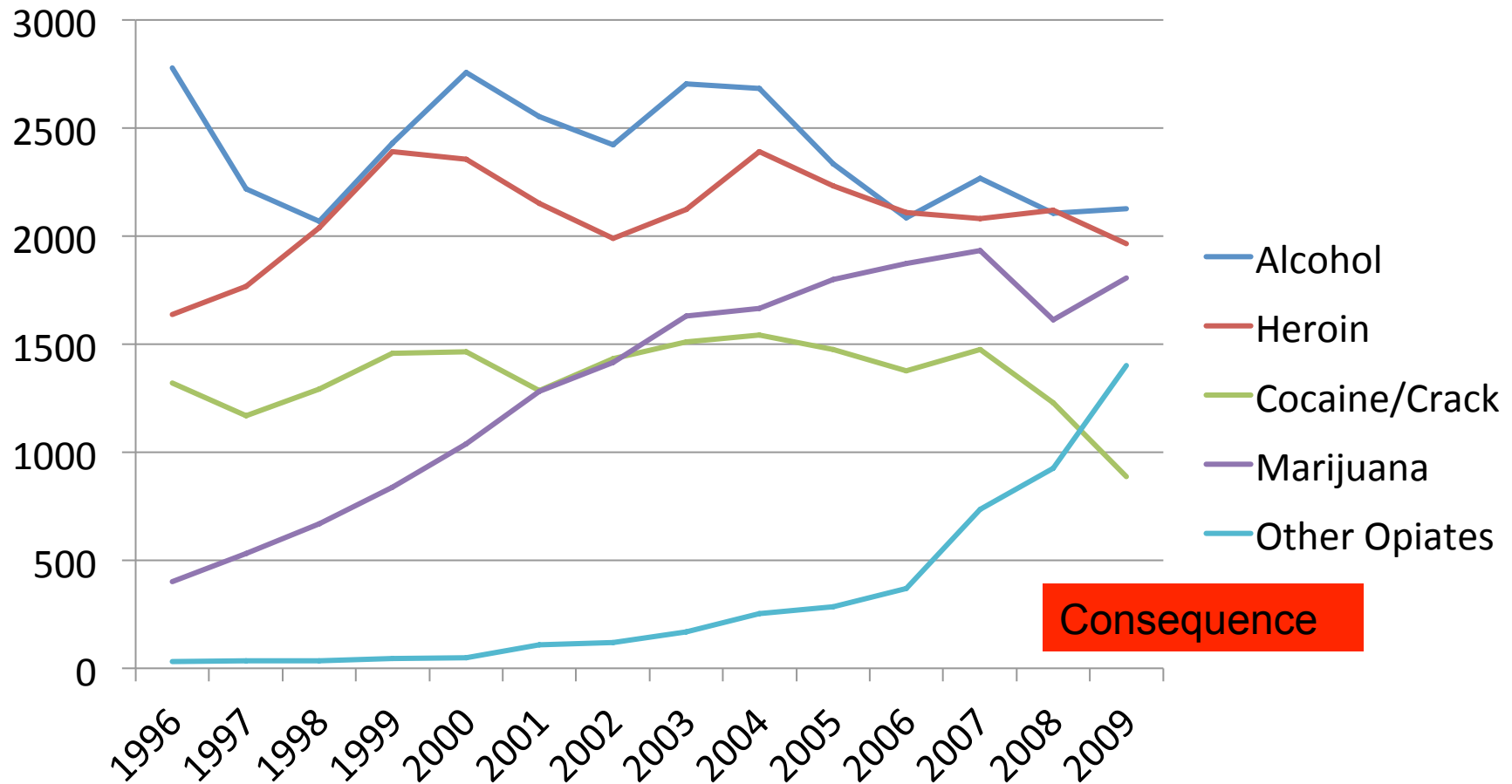
Increased Consequences

Long-term Trends in Past Month Marijuana Use for Delaware 5th, 8th, and 11th Graders



Consumption – Increase in past 2 years

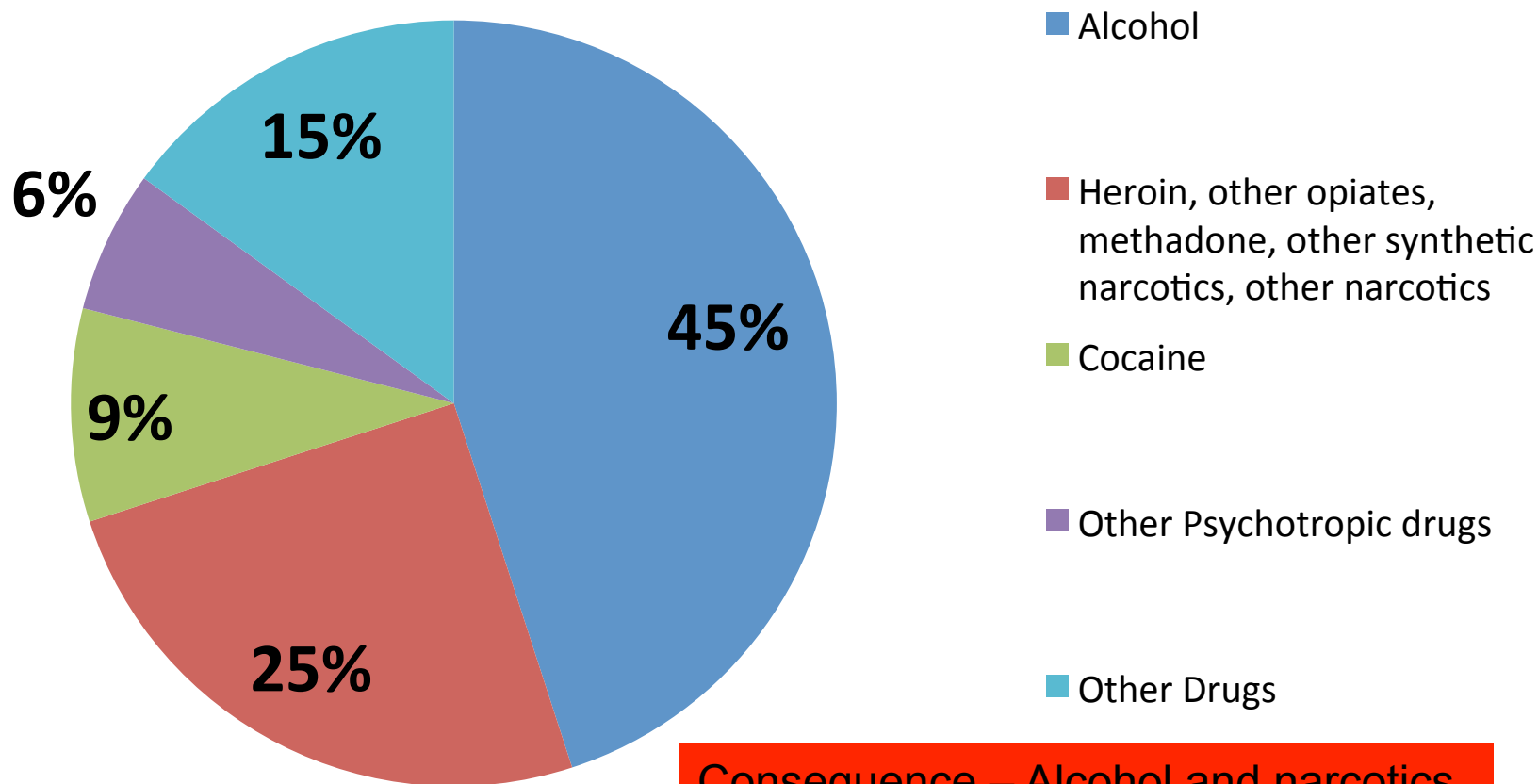
Adult Alcohol and Heroin Treatment Admissions are Highest, but Marijuana and Other Opiates' are Rising Rapidly



Consequence

**% Increase since 1996: Alcohol -23% Heroin +20% Cocaine -33%
Marijuana +352% Other Opiates +4416%**

Drug and Alcohol Deaths in Delaware by Type 2001-2005



Consequence – Alcohol and narcotics are #1 and #2 in drug-related deaths

Consumption – Young adults are highest consumers

Young Adult Prevalence

- 18-25 year olds are highest for past month alcohol use—65% and binge drinking 45%
- 18-25 year olds are highest for past month marijuana use – 19%
- 18-25 year olds are highest for other illicit drugs use – 8%
- 18-25 year olds are highest for non-medical pain reliever use – 12%
- **All of the above are higher than national norms**

Conclusion

- Data on consumption and consequences support the priorities of alcohol, marijuana and heroin and other opiates; and
- Use is highest among young adults, while dependence, deaths and treatment need are highest among middle adults, so the logical, data-supported target for prevention is youth and young adults

Delaware Resources

Delaware Drug and Alcohol Tracking Alliance Website

www.udel.edu/delawaredata

- *Epidemiological Profiles for State and Substate areas
- *Lists and Maps of Community organizations and Resources
- *Reports from the Delaware School Surveys dating back to 1989
- *Minutes and reports from DDATA meetings
- *Links to other state resources

State of Delaware Prevention Services Website

www.dhss.delaware.gov/dhss/dsamh/prevention.html

- *Delaware SPF-SIG website and links
- *Delaware Substance Abuse Block Grant
- *Other Prevention Services

Division of Prevention and Behavioral Health Services

<http://kids.delaware.gov/pbhs/pbhs.shtml>



Federal Resources

Community Anti-Drug Coalitions of America

www.cadca.org

Results (including Delaware specific numbers) from the National Household Survey on Drug Use and Health

<http://oas.samhsa.gov/nsduhlatest.htm>

National Institute on Drug Abuse

www.nida.nih.gov

Partnership for a Drug-Free America

www.drugfree.org

Students Against Destructive Decisions, Inc.

www.sadd.org

Substance Abuse and Mental Health Services Administration

www.samhsa.gov

