

Welcome!



We will get started in just a few moments.

Please feel free to introduce yourself to others.

State Epidemiological Outcomes Workgroup Summer Session

University of Delaware
Center for Drug and Health Studies
August 22, 2023



State Epidemiological Outcomes Workgroup

Funding for this project has been provided by the Delaware Department for Health and Social Services, Division of Substance Abuse and Mental Health through the Substance Abuse and Mental Health Services Administration (SAMHSA).



Agenda

Welcome & Introductions

SEOW Goals

New Data Products

Data Champion

Main Presentation

Network Share Out

The goals of the State Epidemiological Outcomes Workgroup (SEOW) are...

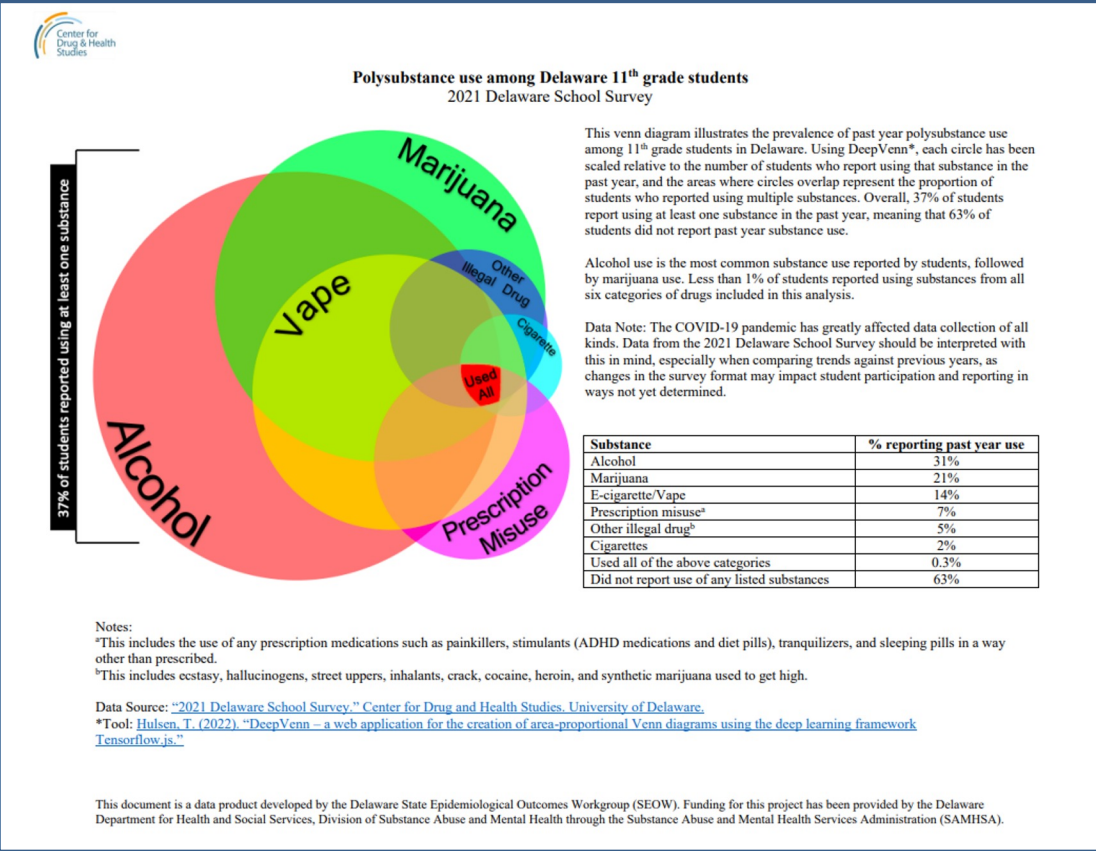
- To build monitoring and surveillance systems to **identify, analyze, and profile data** from state and local sources;
- To **identify, share, and analyze data**;
- To **create data-guided products** that inform prevention planning and policies;
- To **train agencies and communities** in understanding, using, and presenting data effectively.

Since we last saw you in December...

NEW!

Behavioral Health and I/DDs
Polysubstance Use Venn Diagram
Maternal and Behavioral Health
Veterans and Behavioral Health
Behavioral Health Rankings

All of the above and more coming to the SEOW site soon!



Behavioral Health and Intellectual and/or Developmental Disabilities (I/DDs)

State Epidemiological Outcomes Workgroup

Spring 2023



Introduction

Developmental disabilities are a broad category of conditions which may or may not include intellectual disability. These are disorders that present during childhood, and include attention deficit hyperactivity disorder (ADHD), learning disorders, language disorders, autism spectrum disorder (ASD), and cerebral palsy, among others. Intellectual disabilities are disorders that lead to delays or difficulties in adaptive and intellectual functioning and include a wide array of diagnoses, such as ASD, cerebral palsy, Down syndrome, fetal alcohol syndrome, and developmental delay. Intellectual and/or developmental disabilities (I/DDs) may have physical impacts on a person's body, including their nervous system, metabolism, gastrointestinal system, or sensory system.

As the following discussion illustrates, many people with I/DD also experience significant behavioral health concerns. The support needs of a person with an I/DD may range from minimal to extensive. This issue brief provides an overview of the topic.



Maternal Behavioral Health Data

Preconception Health

Indicator, 2020	Delaware	All Sites
Any Reported Cigarette Smoking, 3 months before Pregnancy	18.5%	14%
Any Reported E-Cigarette Use, 3 months before Pregnancy	5%	5.2%
Heavy Drinking (8 or more drinks/week), 3 months before Pregnancy	2.7%	3%
Self Reported Depression, 3 months before Pregnancy	16.9 %	15.5%
Health Insurance Status - Medicaid, 1 month before Pregnancy	31.4%	23.5%
Health Insurance Status - None, 1 month before Pregnancy	10.2%	14%

Data Source: [Pregnancy Risk Assessment Monitoring System, CDC Division of Reproductive Health, National Center for Chronic Disease Prevention and Health Promotion](#)

Risk: Intimate Partner Violence

4.3%
Delaware women reported experiencing Intimate Partner Violence during the 12 months before pregnancy

2.7%
Delaware women reported experiencing Intimate Partner Violence during pregnancy

Delaware scored a D- on the 2023 The Policy Center for Maternal Mental Health Maternal Mental Health State Report Card

The report card grades states on three domains: providers and programs; screening and screening reimbursement; and insurance coverage and payment.

The National average score was a D.



Funding for the [SEOW](#) has been provided by the Delaware Department for Health and Social Services, Division of Substance Abuse and Mental Health through the Substance Abuse and Mental Health Services Administration (SAMHSA).

Data Champion



SEOW Data Champion

Delaware's State Epidemiological Outcomes Workgroup would like to recognize

Dionne Cornish



For their dedication and hard work to advance the lives of Delawareans through the use, dissemination, and promotion of behavioral health data.

For your valuable contributions, the SEOW recognizes you and thanks you.



Center for Drug & Health Studies SEOW Facilitator Team

August 22, 2023

Date

FEATURED PRESENTATIONS:

988 In Delaware

**State of Delaware Police
Diversion Program**

Q & A

MEMBER NETWORK SHARE OUT



THANK YOU!
WE WILL SEE YOU IN JANUARY 2024

