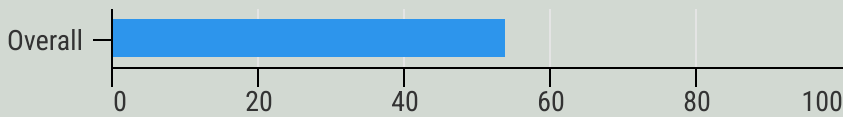


Delaware

State Epidemiological Outcomes Workgroup (SEOW)

October 2022 to September 2023

Percentage of adults reporting past month drinking*



The SEOW draws data from over **35 sources** to compile the annual Delaware Epidemiological Profile and other publications.

*Data from the 2021 Delaware Behavioral Risk Factor Surveillance System

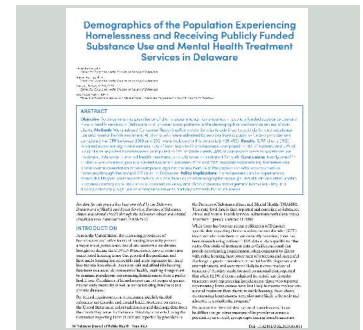
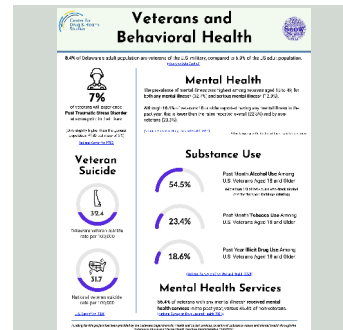
Identify,
Analyze,
and Share
Data

GOAL
1

GOAL
2

Create
Data-
Guided
Products

1 Article
1 Brief Report
1 "Epi" Profile
15 Infographics

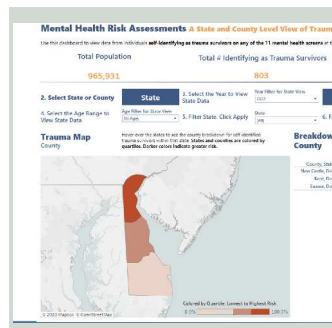


8

Presentations
shared by the
SEOW in the past
year

>20

Data and
information
requests
fulfilled



Train
Communities in
Understanding
and Using Data

GOAL
3

GOAL
4

Build State
and Local
Level
Monitoring
Systems

2

SEOW
meetings
held

1

SEOW
3D webinars
hosted

55

Organizations
represented
on the SEOW

140

Collaborators
on the SEOW
listserv

<https://cdhs.udel.edu/seow/what-is-the-seow/>

Support for SEOW has been provided by the Delaware Department of Health and Social Services, Division of Substance Abuse and Mental Health through funding from the U.S. Substance Abuse and Mental Health Services Administration (SAMHSA).